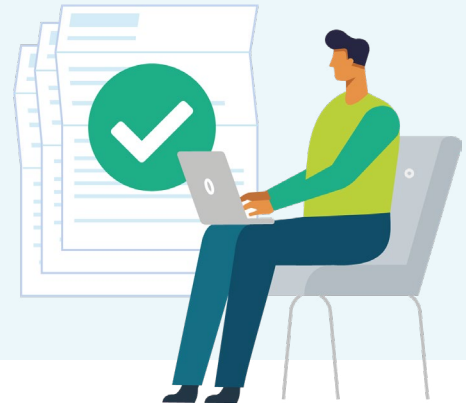


Lease management and compliance. All in one place.









Solution Overview

Commercial leases are complex – and that’s without managing the added complications of leased equipment. With so many moving pieces, it takes a lot of attention to detail to fully understand your terms, optimize your agreements, and avoid missing key dates.

Automating your lease portfolio with MRI ProLease Direct eliminates error-prone manual processes, giving you more visibility and control over your data. With real-time data insights, you can unlock efficiencies, make better leasing decisions, and increase revenue for your business.

Key Features

-  Handle all lease types and lease classifications in one location
-  Easily search lease data to manage key dates
-  Manage CAM reconciliation to maintain transparency, build trust, and avoid disputes
-  Quickly calculate financial disclosures and amortization schedules for journal entries
-  Simplify accounts receivable and accounts payable processes
-  Manage scheduling and distribution

Business Benefits

- More confidence in your data, deeper insights, and stronger decision-making capability
- Flexibility to scale technology as your business and needs evolve
- Simplified, efficient portfolio management by automating calculations and manual processes
- Increased finance and property team collaboration through managing and sharing data in one centralized location

