

## Experience the future of web-based proptech software

### Solution Overview

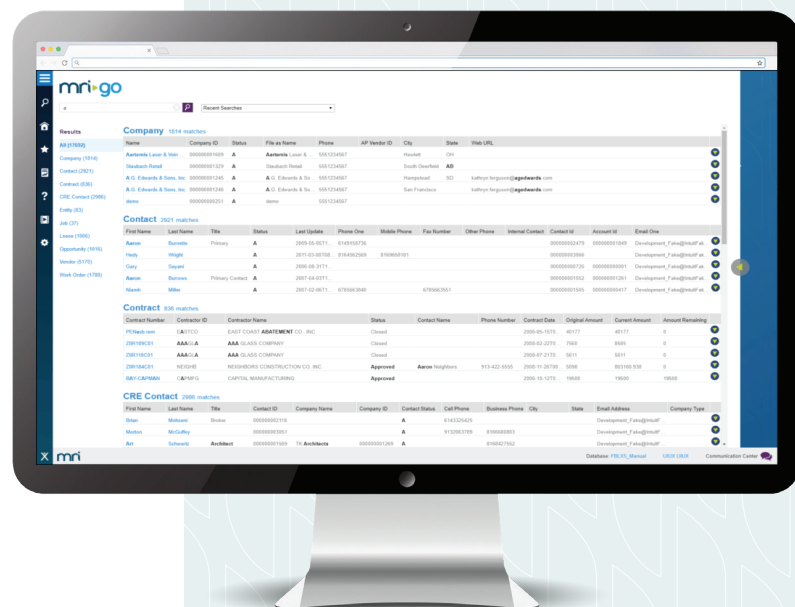
MRI's revolutionary Platform X is the future of real estate technology. It's flexible enough to act as the central hub of your infrastructure, allowing you to add modules and third-party applications to handle specific business functions. Multiple departments within your organisation can all work from the same central repository without compromising functionality. Integrations allow users to work more efficiently by performing diverse tasks from within a single system. MRI's Partner Connect ecosystem is driven by a commitment to integration so you can always choose the right application for the way you do business.

### Key Features

- SaaS and web-based functionality gives users the flexibility to access property information online from desktop and mobile devices, while keeping data secure
- Effortlessly navigate your data with one global search functionality that covers all records and databases
- Centralise lease and tenant information with configurable and comprehensive lease profiles
- View real-time performance indicators on-the-go with data mobility and device freedom
- Organise and analyse data with configurable data visualisation tools and flexible reporting

### Business Benefits

- Support local and regional markets with international residential property management functionality
- Centralised property data ensures accuracy across integrated systems and reduces manual processes
- Work more efficiently and securely with Single Sign-On capabilities
- Gain flexibility without compromising data integrity or security
- Access the latest advancements and new modules as they are released



# A flexible real estate software platform with integrations to fit your business



## **Connect Suite**

- Effectively manage the residential lifecycle from leads to renewals with scalable, automated processes
- Support flexible rent dates, proration, step-ups, break clauses, common banking and more

## **Financials**

- Gain visibility into financial performance with access to all levels of portfolio data
- Integrate financials directly with your property management system to simplify property accounting and reporting
- Reduce errors and improve accuracy with a single source for property and financial data

## **Commercial**

- Automate the full range of lease clauses, breakpoints, offsets, estimated payments and recoveries
- Centralise building, suite and lease information with the flexibility of Platform X

## **Tenant Connect**

- Give tenants visibility into account information through a user-friendly online portal
- Improve operations and revenue capture by offering real-time e-payment options, including ACH and credit cards, to receive your funds faster

## **Lease Flow**

- Maximise your commercial real estate leasing process with a fully functional leasing CRM tool
- Gain visibility and in-depth analysis to drive strategic, informed decisions

## **Advanced Retail**

- Automate complex retail lease calculations to streamline operations
- Improve retail lease performance and forecasting accuracy with software designed specifically for retail properties

## **Investment**

- Manage the entire real estate investment life cycle with comprehensive investment management software
- Mitigate risk, increase investor satisfaction and take control of your data

## **Reporting and Analytics**

- Visualise complex data structures and identify trends around financials, investments and property management
- Make timely, strategic decisions to improve investment performance